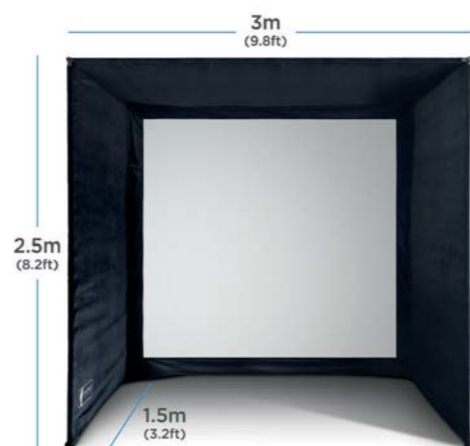




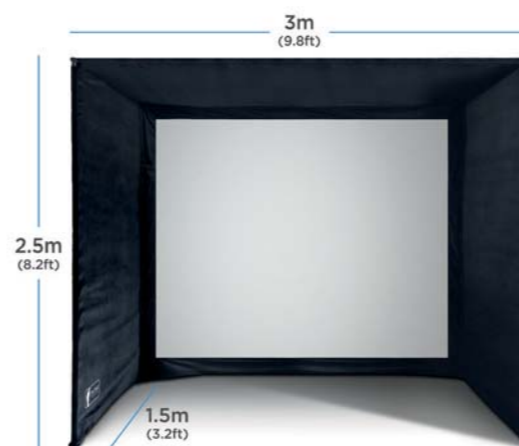
**SIMSPACE**  
GOLF ENCLOSURES

**ASSEMBLY INSTRUCTIONS**

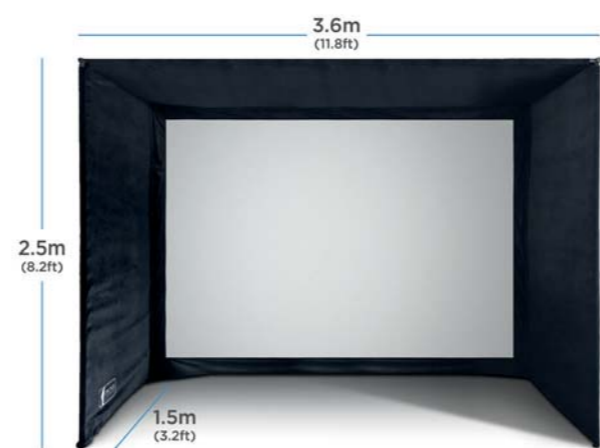
**SIMSPACE ENCLOSURES:**



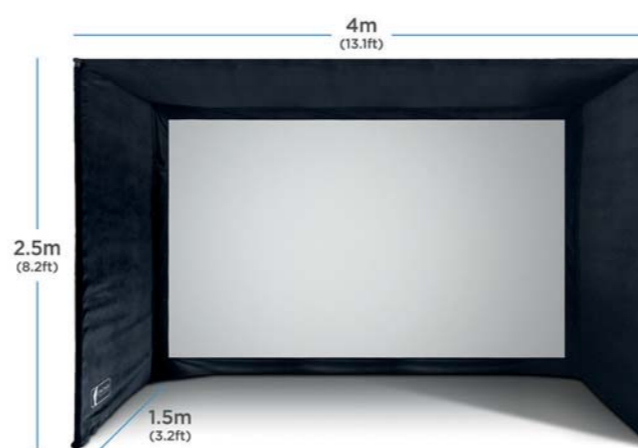
**SIM/001**  
2.6W x 2.5H x 1.5D Mtr



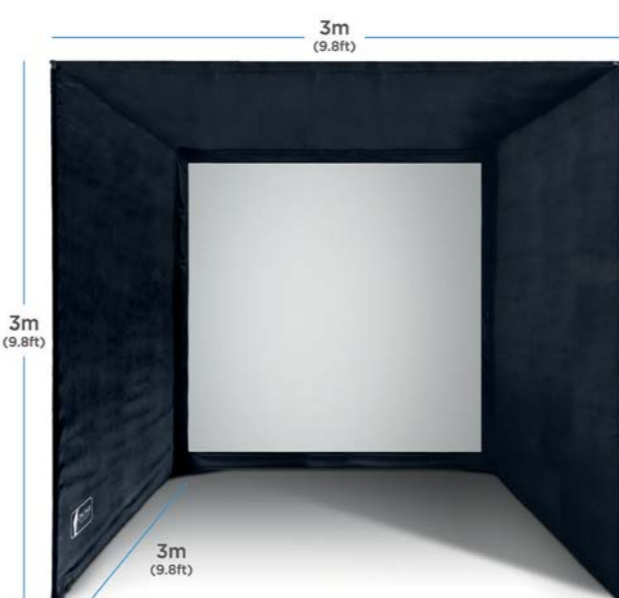
**SIM/002**  
3W x 2.5H x 1.5D Mtr



**SIM/003**  
3.6W x 2.5H x 1.5D Mtr



**SIM/004**  
4W x 2.5H x 1.5D Mtr



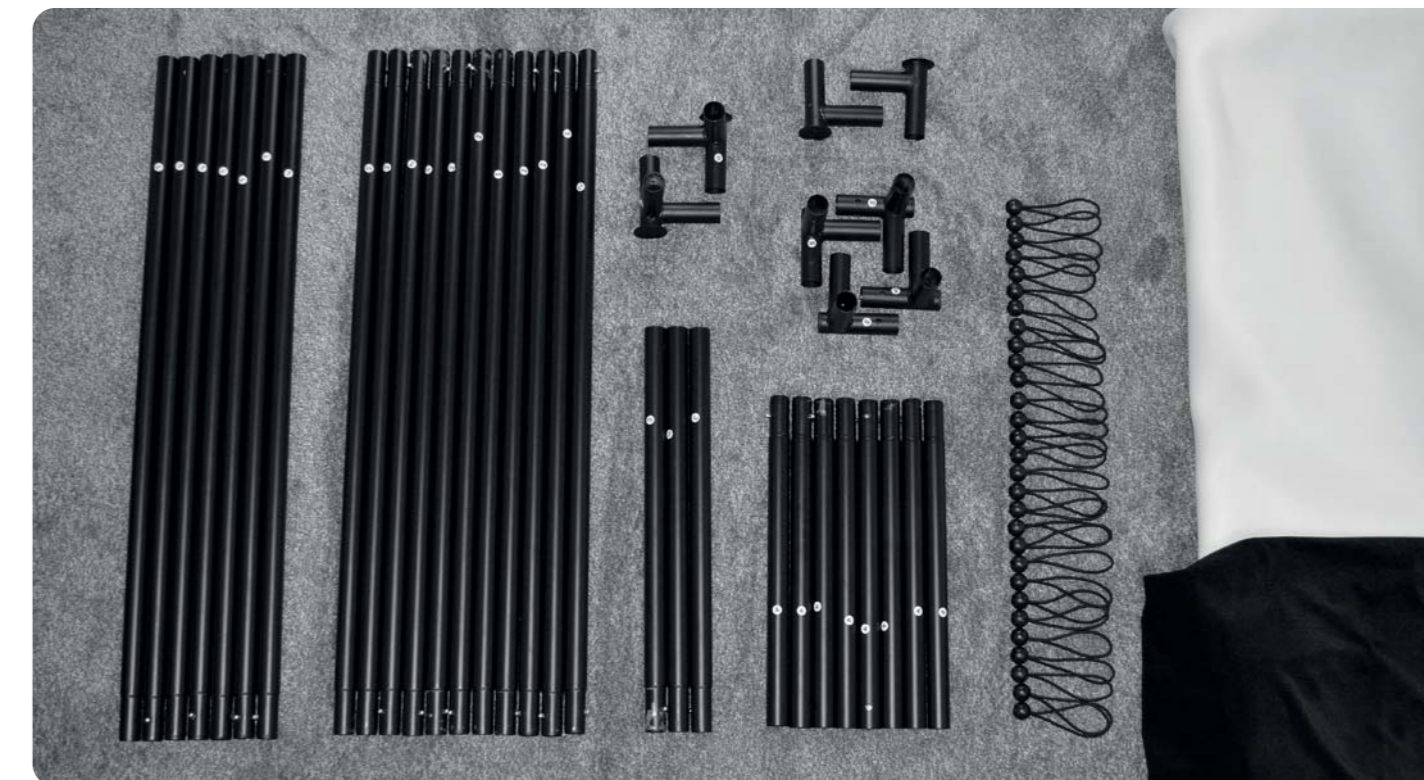
**SIM/005**  
3W x 3H x 3D Mtr



**SIM/006**  
4W x 3H x 3D Mtr

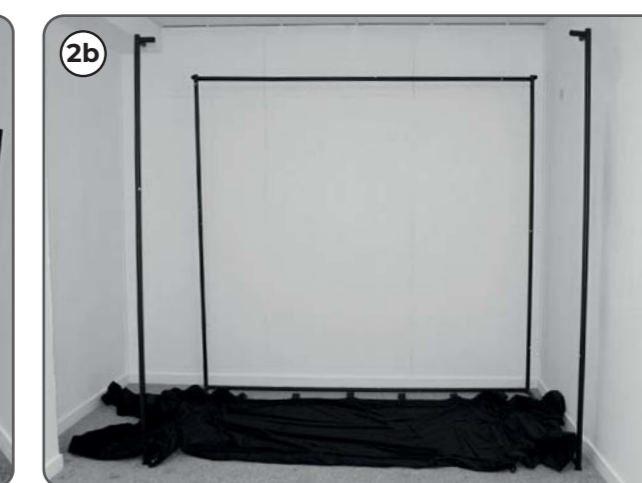
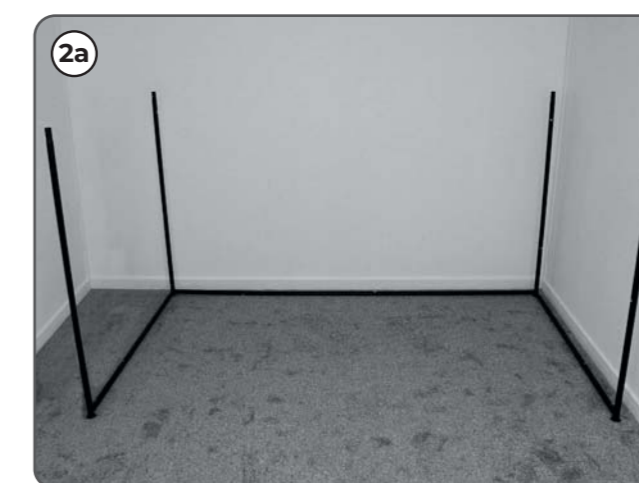
**STEP 1:**

For ease of assembly, lay out all the pieces and have the poles arranged in size order (see image below). Quantities will vary depending on model.



**STEP 2:**

Start building the enclosure by placing the base corner units and joining poles to make the base frame as shown below. Lay the fabric down making sure the velcro straps are at the back and the push side of the fabric is face down.





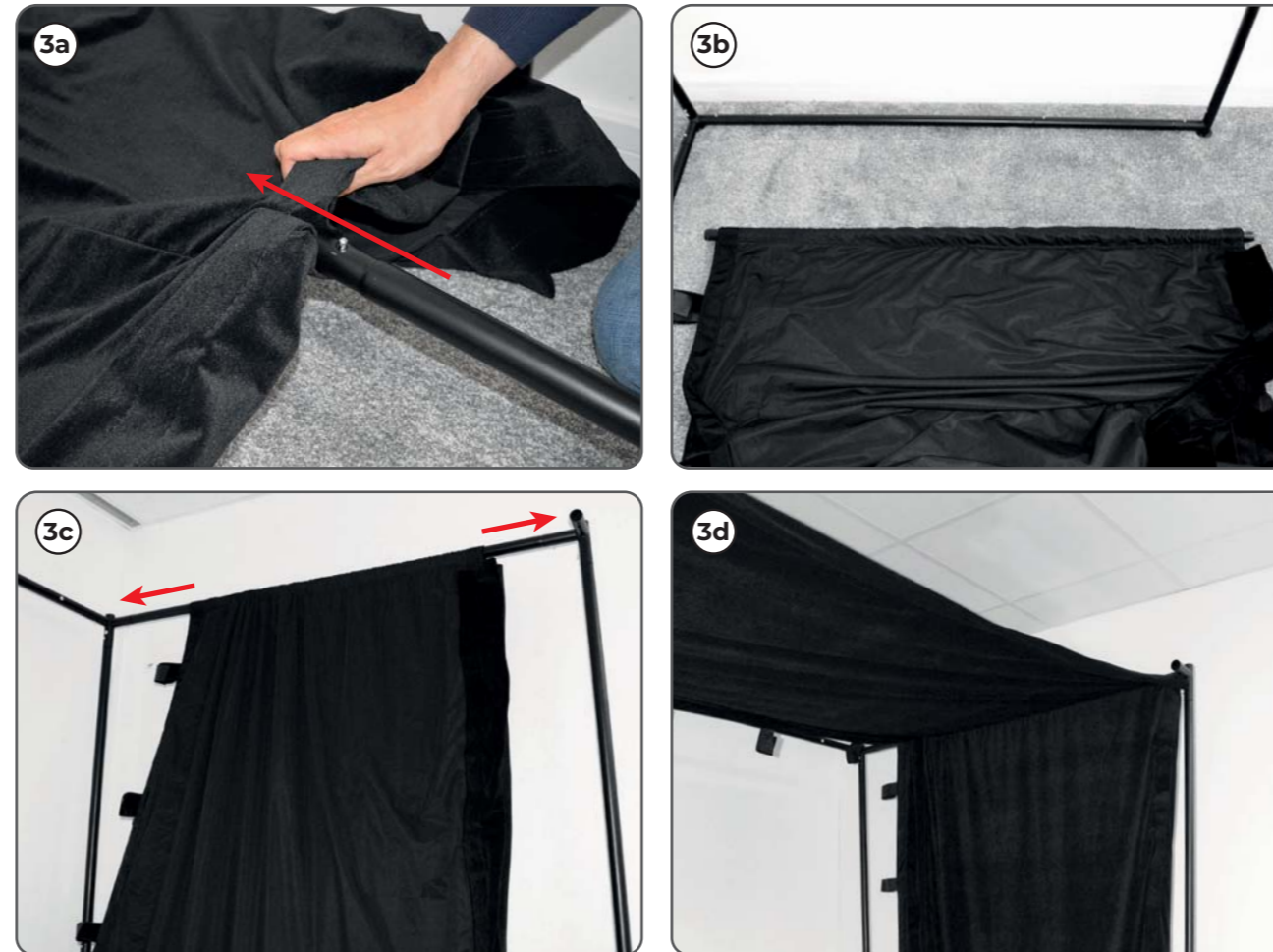


**SIMSPACE**  
GOLF ENCLOSURES

Customer service contact:  
customerservice@secondchance.co.uk

### STEP 3:

Insert the top centre poles through the fabric pockets on both sides. Then connect these poles to the upper side sections as shown in the images below.



### STEP 4:

Next attach the front centre poles to both top corners to complete the frame of the enclosure.



### STEP 5:

First secure the velcro around the front poles and then around the base poles. Next attach all the rear velcro straps around the rear poles and tighten the fabric.



### STEP 6:

Attach the impact screen to the inner velcro strips starting with one of the corners. Finally secure the bungee toggles to the rear of the screen and around poles. These will tighten the screen and remove any slack.

